

## HISTORY INFORMATION FOR THE FOLLOWING MANUAL:

# ***SERVICE MANUAL***

---

## **AZ1-FK Chassis**

***ORIGINAL MANUAL ISSUE DATE: 2/2010***

<b>Version</b>	<b>Date</b>	<b>Subject</b>
1.0	2/11/2010	No revisions or updates
2.0	3/4/2010	Added caution for handling Glass Assembly. (Replaced pages 2 & 3) Added Safety-Related Warning regarding caution when handling the LCD Panel. (Replaced page 4) Removed Main Bracket PN for 22" model. (Replace page 14) Added Service Adjustment information. (Reissue entire manual)
3.0	7/19/2010	Added replacement panel information. (Reissue entire manual)

**LCD Digital Color TV**

**SONY®**

# ***SERVICE MANUAL***

---

***AZ1-FK Chassis***

**LCD Digital Color TV**

**SONY®**

# MODEL LIST

---

<i>MODEL</i>	<i>COMMANDER</i>	<i>DESTINATION</i>
<b>KDL-22BX300</b>	<i>RM-YD035</i>	<i>US</i>
<b>KDL-22BX300</b>	<i>RM-YD035</i>	<i>CND</i>
<b>KDL-22BX300</b>	<i>RM-YD035</i>	<i>MX</i>
<b>KDL-22BX300</b>	<i>RM-YD035</i>	<i>LATIN AMERICA</i>

<i>MODEL</i>	<i>COMMANDER</i>	<i>DESTINATION</i>
<b>KDL-32BX300</b>	<i>RM-YD035</i>	<i>US</i>
<b>KDL-32BX300</b>	<i>RM-YD035</i>	<i>CND</i>
<b>KDL-32BX300</b>	<i>RM-YD035</i>	<i>MX</i>

# TABLE OF CONTENTS

---

<b>Specifications.....</b>	<b>1</b>
<b>Warnings and Cautions.....</b>	<b>2</b>
<b>Safety-Related Warning.....</b>	<b>4</b>
<b>Safety Check-Out.....</b>	<b>5</b>
<b>Self Diagnosis Functions.....</b>	<b>7</b>
<b>SEC 1. Disassembly/Part Number Information.....</b>	<b>11</b>
1-1. Table-Top Stand Assembly Removal.....	11
1-2. Rear Cover, Speakers, and Vesa Plate Removal.....	12
1-2-1. KDL-22BX300 Only.....	12
1-2-2. KDL-32BX300 Only.....	13
1-3. A Board, GD1/G2LE (Power) Boards, LCD Panel, H Board, Switch Unit, and Bezel Assembly Removal.....	14
1-3-1. KDL-22BX300 Only.....	14
1-3-2. KDL-32BX300 with S-LCD Panel Only.....	15
1-3-3. KDL-32BX300 with CMO Panel Only.....	16
1-4. Cleaning the LCD Panel.....	17
1-5. Screw Legend.....	17
1-6. Connectors.....	18
1-6-1. KDL-22BX300 Only.....	18
1-6-2. KDL-32BX300 (S-LCD Panel Only).....	18
1-6-3. KDL-32BX300 (CMO Panel Only).....	18
1-7. Accessories and Packing.....	19
1-8. Miscellaneous.....	19
1-9. Remote Commander.....	19

# TABLE OF CONTENTS

---

<b>SEC 2. Service Adjustments .....</b>	<b>20</b>
2-1. Accessing Service Adjustment Mode .....	20
2-2. Selecting the Panel Code After Replacement .....	21
2-2-1. Verifying the Panel Code.....	22
2-3. White Balance Adjustments.....	23
<b>SEC 3. Diagrams .....</b>	<b>25</b>
3-1. Circuit Boards Location .....	25
3-2. Block Diagram .....	26

# SPECIFICATIONS

System	
Television system	NTSC: American TV standard ATSC (8VSB terrestrial): ATSC compliant 8VSB QAM on cable: ANSI/SCTE 07 2000 (Does not include CableCARD functionality)
Channel coverage	Analog terrestrial: 2 - 69 / Digital terrestrial: 2 - 69 Analog Cable: 1 - 135 / Digital Cable: 1 - 135
Panel system	LCD (Liquid Crystal Display) Panel
Speaker output	10 W + 10 W (KDL-32BX300) / 5 W + 5 W (KDL-22BX300)
Input/Output jacks	
CABLE/ANTENNA	75-ohm external terminal for RF inputs
VIDEO IN	VIDEO: 1 Vp-p, 75 ohms unbalanced, sync negative AUDIO: 500 mVrms (Typical) / Impedance: 47 kilohms
COMPONENT IN 1/2	YPbPr (Component Video): Y: 1.0 Vp-p, 75 ohms unbalanced, sync negative / PB: 0.7 Vp-p, 75 ohms PR: 0.7 Vp-p, 75 ohms / Signal format: 480i, 480p, 720p, 1080i, 1080p AUDIO: 500 mVrms (Typical) / Impedance: 47 kilohms
HDMI IN 1/2	HDMI: Video: 480i, 480p, 720p, 1080i, 1080p, 1080/24p Audio: Two channel linear PCM 32, 44.1 and 48 kHz, 16, 20 and 24bits, Dolby Digital PC Input (see page 42)
AUDIO OUT	500 mVrms (typical)
DIGITAL AUDIO OUT (OPTICAL)	PCM/Dolby Digital optical signal
PC IN	D-sub 15-pin, analog RGB, 0.7 Vp-p, 75 ohms, positive See the PC Input Signal Reference Chart for PC and HDMI IN 1/2 on page 42.
PC/HDMI IN 1 AUDIO INPUT	Stereo mini jack, 500 mVrms, (Typical) / Impedance: 47 kilohms

Model name KDL-	32BX300	22BX300
Power and others		
Power requirement	110-240 V AC, 50/60 Hz (U.S.A. / Canada 120 V AC, 60 Hz)	
Power consumption in use	135 W	63 W
Power consumption in standby	less than 1 W	
Screen size (inches measured diagonally)	31.5 (32 class)	21.6 (22 class)
Display resolution	1,366 dots (horizontal) × 768 lines (vertical)	
Speaker/Full range (2) (mm) (inches)	45 × 130 1 13/16 × 5 1/8	40 × 100 1 5/8 × 4
Dimensions with stand (mm) (inches)	804 × 532 × 220 31 3/4 × 21 × 8 3/4	575 × 398 × 215 22 3/4 × 15 3/4 × 8 1/2
without stand (mm) (inches)	804 × 497 × 96 31 3/4 × 19 5/8 × 3 7/8	575 × 361 × 88 22 3/4 × 14 1/4 × 3 1/2
wall-mount hole pattern (mm)	200 × 200	100 × 100
wall-mount screw size (mm)	M6	M4
	8 - 12 mm	
Mass with stand (kg) (lb.)	10.8 23.8	6.6 14.6
without stand (kg) (lb.)	9.1 20.1	5.7 12.6
Supplied accessories	Remote control RM-YD035 (1)/Size AAA batteries (2)/Operating Instructions (1)/Quick Setup Guide (1)/Warranty Card (1)/Safety and Regulatory Booklet (1)/Software License (1)/Stand installation guide (1)/Table-Top Stand (1 set)/Screws (7)	
Optional accessories	Connecting cables / Support Belt Kit / Wall-Mount Bracket: SU-WL500, SU-WL100	

- Optional accessories availability depends on its stock.
- Design and specifications are subject to change without notice.

## Licensing Information

Macintosh is a trademark of Apple Inc., registered in the U.S. and other countries.

HDMI, the HDMI logo and High-Definition Multimedia Interface are trademarks or registered trademarks of HDMI Licensing, LLC.

Ferguson Patent Properties, LLC:

U.S. Patent No. 5,717,422

U.S. Patent No. 6,816,141

Manufactured under license from Dolby Laboratories. Dolby, and the double-D symbol are trademarks of Dolby Laboratories.

Blu-ray Disc is a trademark.

“BRAVIA”, BRAVIA, BRAVIA Sync, and  are trademarks or registered marks of Sony Corporation.

“PlayStation” is a registered trademark and “PS3” is a trademark of Sony Computer Entertainment Inc.



Your BRAVIA TV is ENERGY STAR® qualified in the “Home” mode. It meets strict energy efficiency guidelines set by the U.S. Environmental Protection Agency and Department of Energy.



ENERGY STAR is a joint program of these government agencies, designed to promote energy efficient products and practices. Changes to certain features, settings, and functionalities of this TV (i.e. Picture/Sound, Power Savings) can increase or change the power consumption. Depending upon such changed settings, the power consumption may exceed the limits required for the ENERGY STAR qualification in the “Home” mode.

# WARNINGS AND CAUTIONS

---

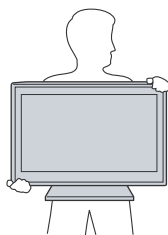
## CAUTION

These servicing instructions are for use by qualified service personnel only. To reduce the risk of electric shock, do not perform any servicing other than that contained in the operating instructions unless you are qualified to do so.

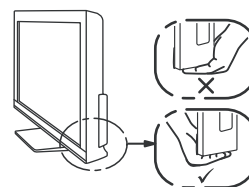
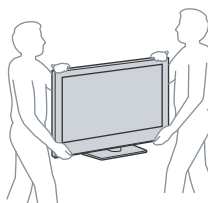
## CARRYING THE TV

- Disconnect all cables when carrying the TV.
- Carry the TV with the adequate number of people; larger size TVs require two or more people.
- Correct hand placement while carrying the TV is very important for safety and to avoid damage.

KDL-22BX300



KDL-32BX300




## WARNING!!

An isolation transformer should be used during any service to avoid possible shock hazard, because of live chassis. The chassis of this receiver is directly connected to the AC power line.



## SAFETY-RELATED COMPONENT WARNING!!

Components identified by shading and  mark on the exploded views are critical for safe operation. Replace all components with Sony parts whose part numbers appear as shown in this manual or in supplements published by Sony. It is essential that all critical parts be replaced only with the part number specified in this manual to prevent electric shock, fire, or other hazard. Circuit adjustments that are critical for safe operation are identified in this manual. Follow these procedures whenever critical components are replaced or improper operation is suspected.

**NOTE:** Do not modify the original design without obtaining written permission from the manufacturer or you will void the original parts and labor guarantee.

# WARNING AND CAUTIONS

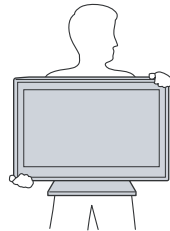
## ATTENTION!!

Ces instructions de service sont à l'usage du personnel de service qualifié seulement. Pour prévenir le risque de choc électrique, ne pas faire l'entretien autre que celui contenu dans le Mode d'emploi à moins que vous soyez qualifié faire ainsi.

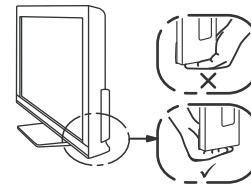
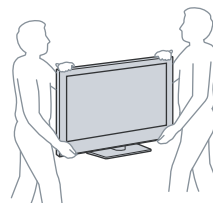
## POUR TRANSPORTER LE TÉLÉVISEUR

- Transportez le téléviseur avec le nombre de personnes approprié ; un téléviseur de grande taille doit être transporté par au moins deux personnes.
- Lors du transport du téléviseur, l'emplacement des mains est très important pour votre sécurité, ainsi que pour éviter de causer des dommages.

KDL-22BX300



KDL-32BX300



## ALERTE!!

Afin d'éviter tout risque d'électrocution provenant d'un châssis sous tension, un transformateur d'isolement doit être utilisé lors de tout dépannage. Le châssis de ce récepteur est directement raccordé à l'alimentation du secteur.



## ATTENTION AUX COMPOSANTS RELATIFS A LA SECURITE!!

Les composants identifiés par une trame et par une marque ⚠ sur les schémas de principe, les vues explosées et les listes de pièces sont d'une importance critique pour la sécurité du fonctionnement. Ne les remplacer que par des composants Sony dont le numéro de pièce est indiqué dans le présent manuel ou dans des suppléments publiés par Sony. Les réglages de circuit dont l'importance est critique pour la sécurité du fonctionnement sont identifiés dans le présent manuel. Suivre ces procédures lors de chaque remplacement de composants critiques, ou lorsqu'un mauvais fonctionnement suspecte.



# SAFETY-RELATED WARNING

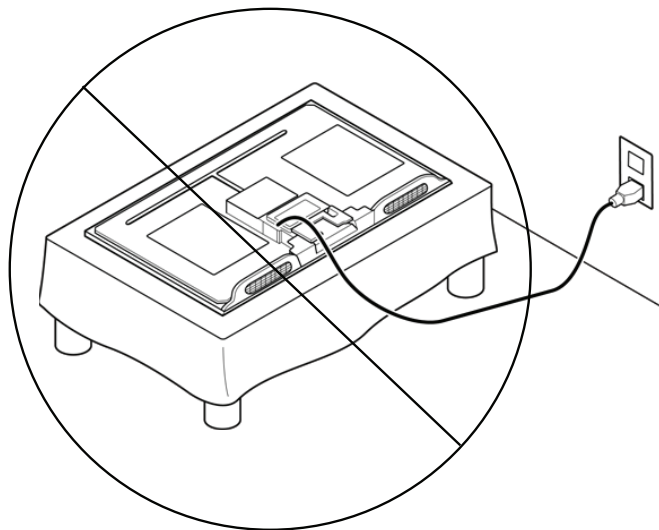
---

## USE CAUTION WHEN HANDLING THE LCD PANEL

When repairing the LCD panel, be sure you are grounded by using a wrist band.

When installing the LCD panel on a wall, the LCD panel must be secured using the 4 mounting holes on the rear cover.

- 1) Do not press on the panel or frame edge to avoid the risk of electric shock.
- 2) Do not scratch or press on the panel with any sharp objects.
- 3) Do not leave the module in high temperatures or in areas of high humidity for an extended period of time.
- 4) Do not expose the LCD panel to direct sunlight.
- 5) Avoid contact with water. It may cause a short circuit within the module.
- 6) Disconnect the AC power when replacing the backlight (CCFL) or inverter circuit.  
(High voltage occurs at the inverter circuit at 650Vrms.)
- 7) Always clean the LCD panel with a soft cloth material.
- 8) Use care when handling the wires or connectors of the inverter circuit. Damaging the wires may cause a short.
- 9) Protect the panel from ESD to avoid damaging the electronic circuit (C-MOS).
- 10) During the repair, DO NOT leave the Power On for more than 1 hour while the TV is face down on a cloth.



# SAFETY CHECK-OUT

After correcting the original service problem, perform the following safety checks before releasing the set to the customer:

1. Check the area of your repair for unsoldered or poorly soldered connections. Check the entire board surface for solder splashes and bridges.
2. Check the interboard wiring to ensure that no wires are “pinched” or touching high-wattage resistors.
3. Check that all control knobs, shields, covers, ground straps, and mounting hardware have been replaced. Be absolutely certain that you have replaced all the insulators.
4. Look for unauthorized replacement parts, particularly transistors, that were installed during a previous repair. Point them out to the customer and recommend their replacement.
5. Look for parts which, though functioning, show obvious signs of deterioration. Point them out to the customer and recommend their replacement.
6. Check the line cords for cracks and abrasion. Recommend the replacement of any such line cord to the customer.
7. Check the antenna terminals, metal trim, “metallized” knobs, screws, and all other exposed metal parts for AC leakage. Check leakage as described below.

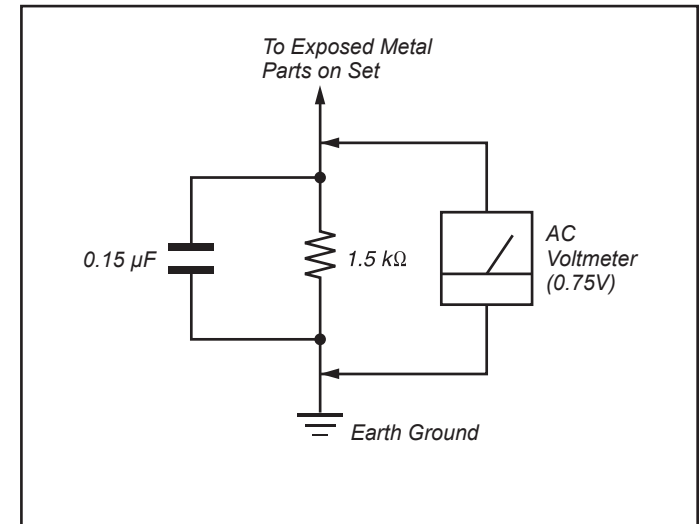


Figure A. Using an AC voltmeter to check AC leakage.

## LEAKAGE TEST

The AC leakage from any exposed metal part to earth ground and from all exposed metal parts to any exposed metal part having a return to chassis, must not exceed 0.5 mA (500 microamperes). Leakage current can be measured by any one of three methods.

1. A commercial leakage tester, such as the Simpson 229 or RCA WT-540A. Follow the manufacturers' instructions to use these instructions.
2. A battery-operated AC milliammeter. The Data Precision 245 digital multimeter is suitable for this job.
3. Measuring the voltage drop across a resistor by means of a VOM or battery-operated AC voltmeter. The "limit" indication is 0.75 V, so analog meters must have an accurate low voltage scale.

The Simpson's 250 and Sanwa SH-63TRD are examples of passive VOMs that are suitable. Nearly all battery-operated digital multimeters that have a 2 VAC range are suitable (see Figure A).

## HOW TO FIND A GOOD EARTH GROUND

A cold-water pipe is a guaranteed earth ground; the cover-plate retaining screw on most AC outlet boxes is also at earth ground.

If the retaining screw is to be used as your earth ground, verify that it is at ground by measuring the resistance between it and a cold-water pipe with an ohmmeter. The reading should be zero ohms.

If a cold-water pipe is not accessible, connect a 60-to 100-watt trouble-light (not a neon lamp) between the hot side of the receptacle and the retaining screw. Try both slots, if necessary, to locate the hot side on the line; the lamp should light at normal brilliance if the screw is at ground potential (see Figure B).

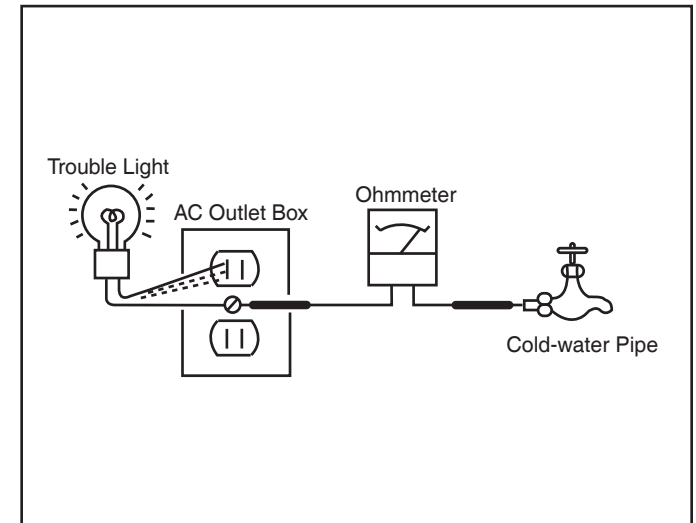


Figure B. Checking for earth ground.

# SELF DIAGNOSIS FUNCTIONS



## SELF DIAGNOSIS FUNCTION

The units in this manual contain a self-diagnostic function. If an error occurs, the STANDBY LED will automatically begin to flash. The number of times the LED flashes translates to a probable source of the problem. A definition of the STANDBY LED flash indicators is listed in the instruction manual for the user's knowledge and reference. If an error symptom cannot be reproduced, the remote commander can be used to review the failure occurrence data stored in memory to reveal past problems and how often these problems occur.

## DIAGNOSTIC TEST INDICATORS

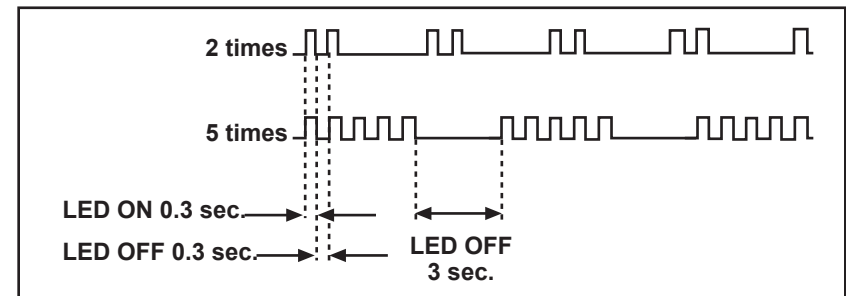
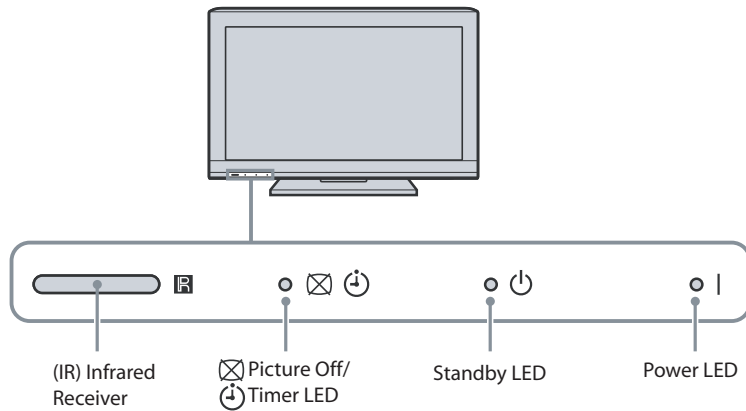
When an error occurs, the STANDBY LED will flash a set number of times to indicate the possible cause of the problem. If there is more than one error, the LED will identify the first of the problem areas.  
Result for all of the following diagnostic items are displayed on screen.

If the screen displays a "0", no error has occurred .

Diagnostic Item	Diagnostic Item Description	Number of times Standby LED blinks	Possible Location
MAIN_POWER	Main Power Over Voltage Protection	2	GD1 (Power) Board (KDL-22BX300 Only) G2LE (Power) Board (KDL-32BX300 Only) A Board
DC_ALERT AUD_PORT	DC Alert Audio Error Detection	3	A Board GD1 (Power) Board (KDL-22BX300 Only) G2LE (Power) Board (KDL-32BX300 Only)
BALANCER	Panel Balancer Error	4	A Board
HFR_ERR	HFR Error	5	A Board LCD Panel TCON Control MT Board
TCON_ERR	TCON Error		
P_ID_ERR	Panel ID NVM Error		
PANEL_POWE	Panel Power		
BACKLITE	Backlight Error	6	A Board
TEMP_ERR	Temperature Error	7	A Board

# SELF DIAGNOSIS FUNCTIONS

## STANDBY LED FLASH COUNT



# SELF DIAGNOSIS FUNCTIONS

## VIEWING THE SELF CHECK DIAGNOSTIC LIST

For errors with symptoms such as “power sometimes shuts off” or “screen sometimes goes out” that cannot be confirmed, it is possible to bring up past occurrences of a failure for confirmation on the Self Check diagnostic screen:

1. TV must be in standby mode. (Power off).
2. Press the following buttons on the Remote Commander within a second of each other:

**DISPLAY** → Channel **5** → Volume **-** → **POWER**.

↑ \* NOTE: This differs from accessing Service Adjustments Mode (Volume +)

The screenshot shows a blue screen titled "SELF CHECK". At the top left is "Back" and at the top right is "<<". The screen displays a list of error codes and their status:

Code	Item	Status
002	MAIN_POWE	001
003	AUD_PORT	000
003	DC_ALERT	000
004	BALANCER	000
005	TCON_ERR	000
005	HFR_ERR	000
005	P_ID_ERR	000
005	PANEL_POWE	000
006	BACKLITE	000
007	TEMP_ERR	000

Annotations on the right side of the screen:

- 001 indicates an error was detected (pointing to the 001 status for MAIN\_POWE)
- 000 indicates no error was detected (pointing to the 000 status for AUD\_PORT)

At the bottom of the screen, there are three numerical values and a button:

- 00000 (Total Operation Time by Hour (max 99999))
- 00010 (Boot Count (max 99999))
- 00000 (Panel Operation Time by Hour (max 99999))
- [Menu] Exit

# ***SELF DIAGNOSIS FUNCTIONS***

---

## **CLEARING THE SELF CHECK DIAGNOSTIC LIST**

Since the diagnostic results displayed on the screen are not automatically cleared, always check the self-diagnostic screen after you have completed the repairs to be sure you have cleared the result display to "0".

1. To clear the Error history and Error count: Press the Channel **8** ➔ Channel **0**.
2. To clear the Panel operation time: Press the Channel **7** ➔ Channel **0**.

## **EXITING THE SELF CHECK DIAGNOSTIC SCREEN**

1. To exit the Self Diagnostic screen, turn off the power to the TV by pressing the POWER button on the remote or the POWER button on the TV.

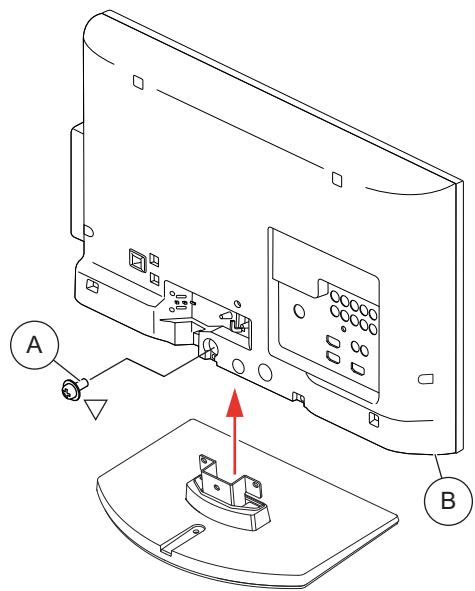
# SEC 1. DISASSEMBLY/PART NUMBER INFORMATION

## 1-1. TABLE-TOP STAND ASSEMBLY REMOVAL

- A

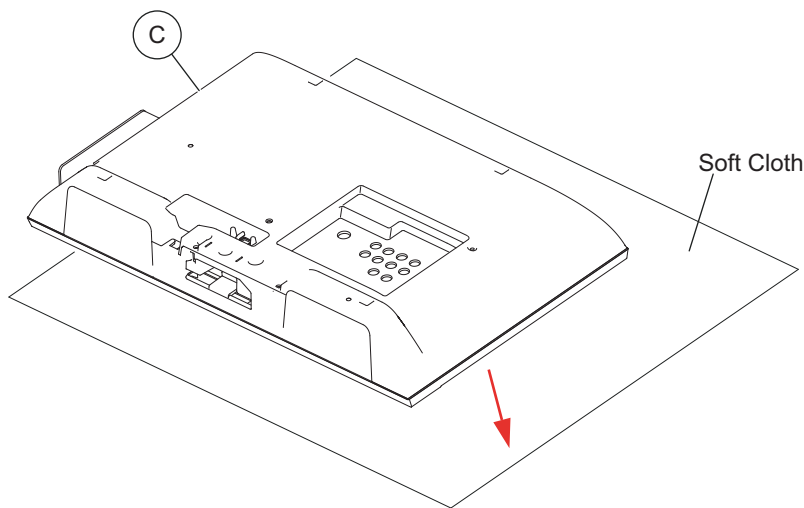
Remove screws from Table-Top Stand Assembly  
3 from KDL-22BX300 ONLY  
4 from KDL-32BX300 ONLY
- B

Lift up TV set to detach from Table-Top Stand Assembly




- C


Gently place the TV set face down onto a soft cloth




Components not identified by a part number or description are not stocked because they are seldom required for routine service.

NOTE: The components identified by shading and  mark are critical for safety. Replace only with part number specified.

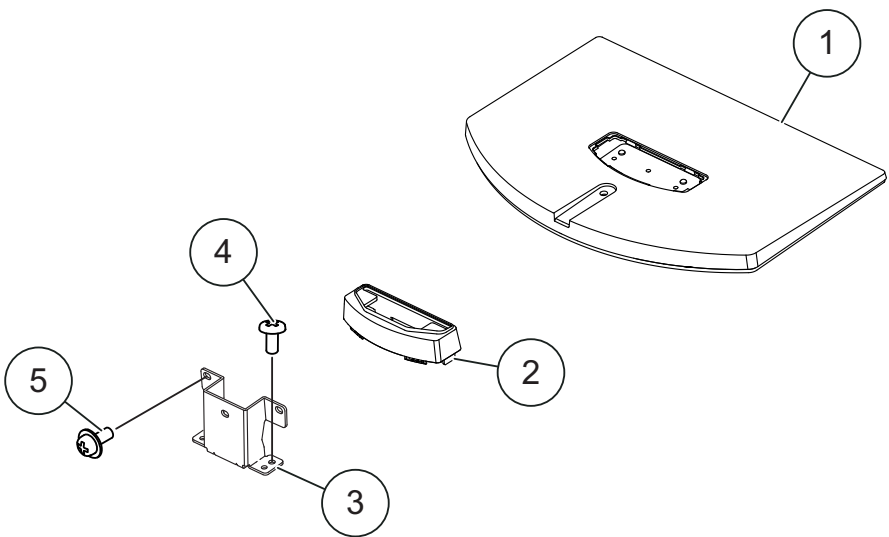
The component parts of an assembly are indicated by the reference numbers in the far right column of the parts list and within the dotted lines of the diagram.


NOTE: Les composants identifiés par un trame et une marque  sont critiques pour la securite. Ne les remplacer que par une piece portant le numero specifie.

\* Items marked with an asterisk are not stocked since they are seldom required for routine service. Expect some delay when ordering these components.

NOTE: The components identified by a red outline and a  mark contain confidential information. Specific instructions must be adhered to whenever these components are repaired and/or replaced. See Appendix A: Encryption Key Components in the back of this manual.

(Check the [Sony Electronics Service Information](#) website for any additional service related issues for this model.)



REF. NO.	PART NO.	DESCRIPTION	[ASSEMBLY INCLUDES]	REF. NO.	PART NO.	DESCRIPTION	[ASSEMBLY INCLUDES]
1	X-2547-393-1	BASE (S3B) ASSEMBLY (KDL-22BX300 ONLY)		3	4-166-860-01	NECK(S5) (KDL-22BX300 ONLY)	
1	X-2547-390-1	BASE (M3B) ASSEMBLY (KDL-32BX300 ONLY)		3	4-175-852-01	NECK(M3B) (KDL-32BX300 ONLY)	
2	4-166-863-01	COVER,NECK(S3B) (KDL-22BX300 ONLY)		4	4-159-298-01	SCREW, +PSW M4X10 (SCREWS TO ATTACH NECK TO BASE ASSEMBLY)	
2	4-175-850-01	COVER, NECK (M3B) (KDL-32BX300 ONLY)		5	2-580-608-01	SCREW, +PSW M5X16 (SCREWS TO ATTACH TABLE-TOP STAND TO LCD TV) For product protection and safety reasons, Sony strongly recommends that you use the screws provided with the TV CAUTION: These screws cannot be used to secure the TV to the Wall Mount Brackets	
					2-580-608-01	SCREW, +PSW M5X16	



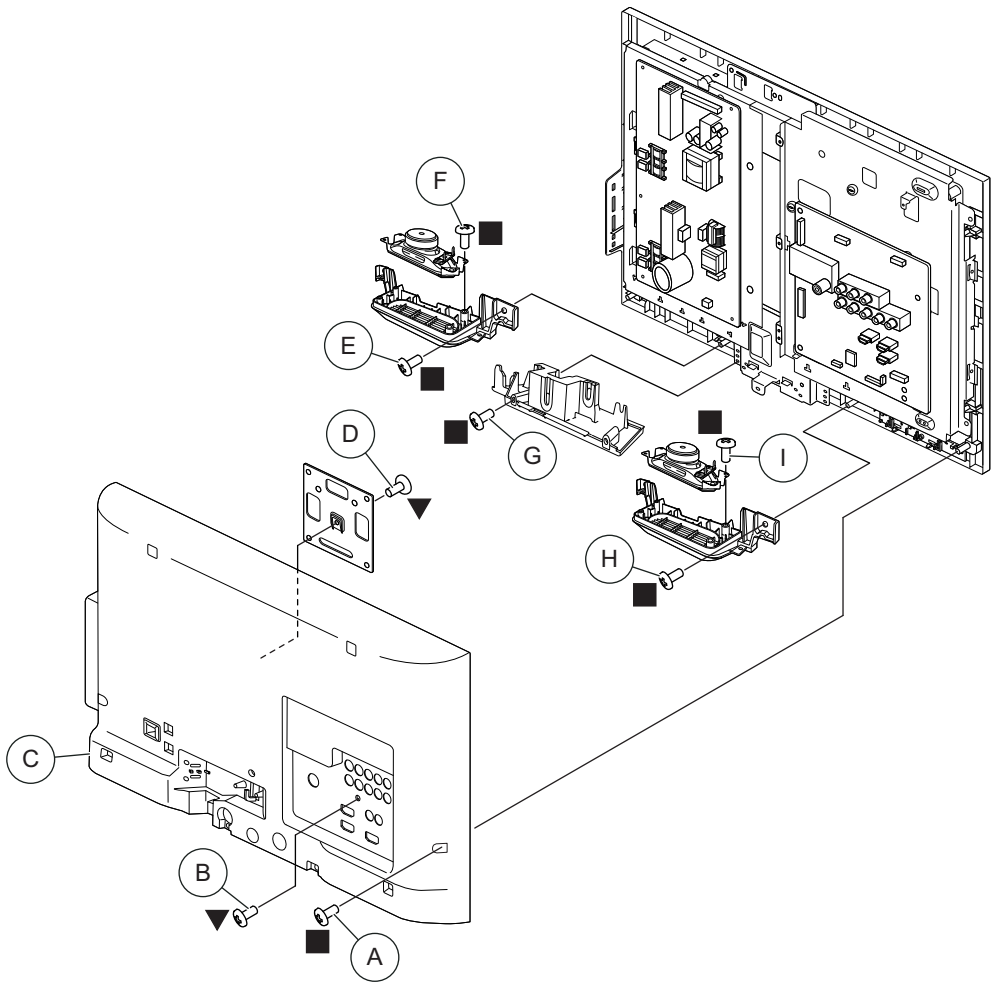
# DISASSEMBLY/PART NUMBER INFORMATION

## 1-2. REAR COVER, SPEAKERS, AND VESA PLATE REMOVAL

### 1-2-1. KDL-22BX300 ONLY

- Ⓐ Remove 4 screws from Rear Cover
- Ⓑ Remove 1 screws from Terminal position
- Ⓒ Lift up Rear Cover to detach from Bezel Assembly
- Ⓓ Remove 1 screw from Vesa Plate to detach from Rear Cover
- Ⓔ Remove 2 screws to detach left-side Speaker Bracket from Bezel Assembly
- Ⓕ Remove 4 screws from left-side Speaker to detach from Speaker Bracket
- Ⓖ Disconnect Power Cord from GD1 (Power) Board and detach from Under Cover, then remove 2 screws to detach Under Cover from Bezel Assembly
- Ⓗ Remove 2 screws to detach right-side Speaker Bracket from Bezel Assembly
- Ⓘ Remove 4 screws from right-side Speaker to detach from Speaker Bracket

NOTE: The Vesa Plate is not included with the Rear Cover, therefore it must be reattached to the replacement Rear Cover

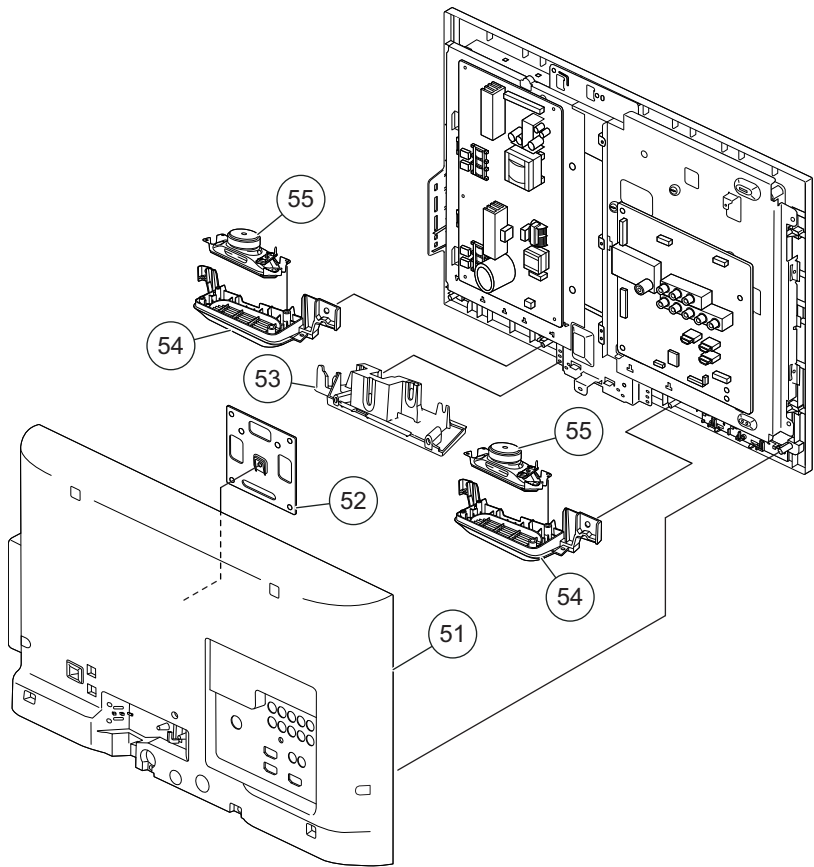


NOTE: The components identified by shading and ⚠ mark are critical for safety. Replace only with part number specified.

NOTE: Les composants identifiés par un trame et un marque ⚠ sont critiques pour la sécurité. Ne les remplacer que par une pièce portant le numéro spécifié.

NOTE: The components identified by a red outline and a 🔒 mark contain confidential information. Specific instructions must be adhered to whenever these components are repaired and/or replaced. See Appendix A: Encryption Key Components in the back of this manual.

(Check the [Sony Electronics Service Information](#) website for any additional service related issues for this model.)



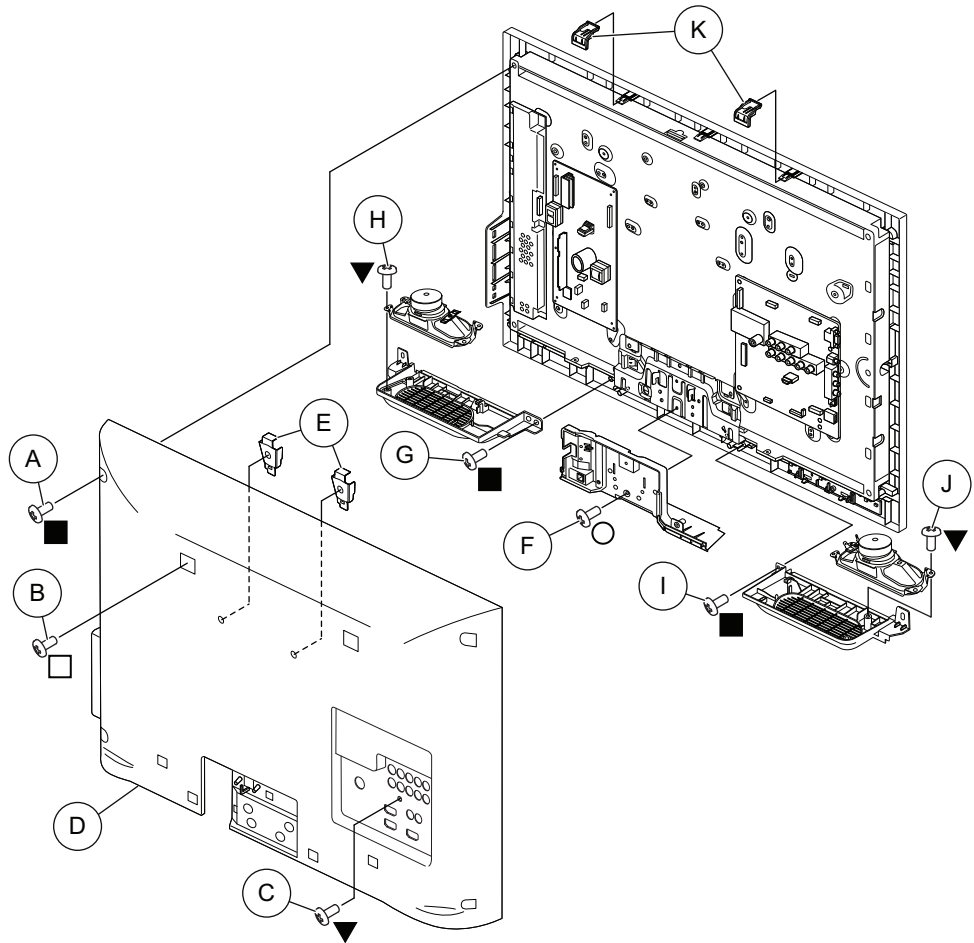
REF. NO.	PART NO.	DESCRIPTION	[ASSEMBLY INCLUDES]	REF. NO.	PART NO.	DESCRIPTION	[ASSEMBLY INCLUDES]
51	4-163-779-01	REAR COVER (22)		55	1-858-339-11	LOUDSPEAKER (4X10CM)	
52	4-163-801-01	PLATE, VESA		■	2-580-640-01	SCREW, +BVTP 4X16 TYPE2 IT-3	
53	4-163-782-01	COVER, UNDER (22)		▼	7-685-648-79	SCREW, +BVTP 3X12 TYPE2 IT-3	
54	4-163-785-01	BRACKET, SPEAKER (22L/R)					


# DISASSEMBLY/PART NUMBER INFORMATION

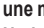
## 1-2-2. KDL-32BX300 ONLY


- (A) Remove 10 screws from Rear Cover
- (B) Remove 2 screws from Rear Cover top-center
- (C) Remove 1 screw from Terminal position
- (D) Lift up Rear Cover to detach from Bezel Assembly
- (E) Slide-out Vesa Brackets to remove from Rear Cover
- (F) Disconnect Power Cord from G2LE (Power) Board and detach from Under Cover, then remove 1 screw from Under Cover to detach from Bottom Frame
- (G) Remove 1 screw from Speaker Cover Right
- (H) Remove 2 screws from right-side Speaker to detach from Speaker Cover Right
- (I) Remove 1 screw from Speaker Cover Left
- (J) Remove 2 screws from left-side Speaker to detach from Speaker Cover Left
- (K) Slide-out Panel Supports to remove from Bezel Assembly

NOTE: The Vesa Brackets are not included with the Rear Cover therefore they must be reattached to the replacement Rear Cover

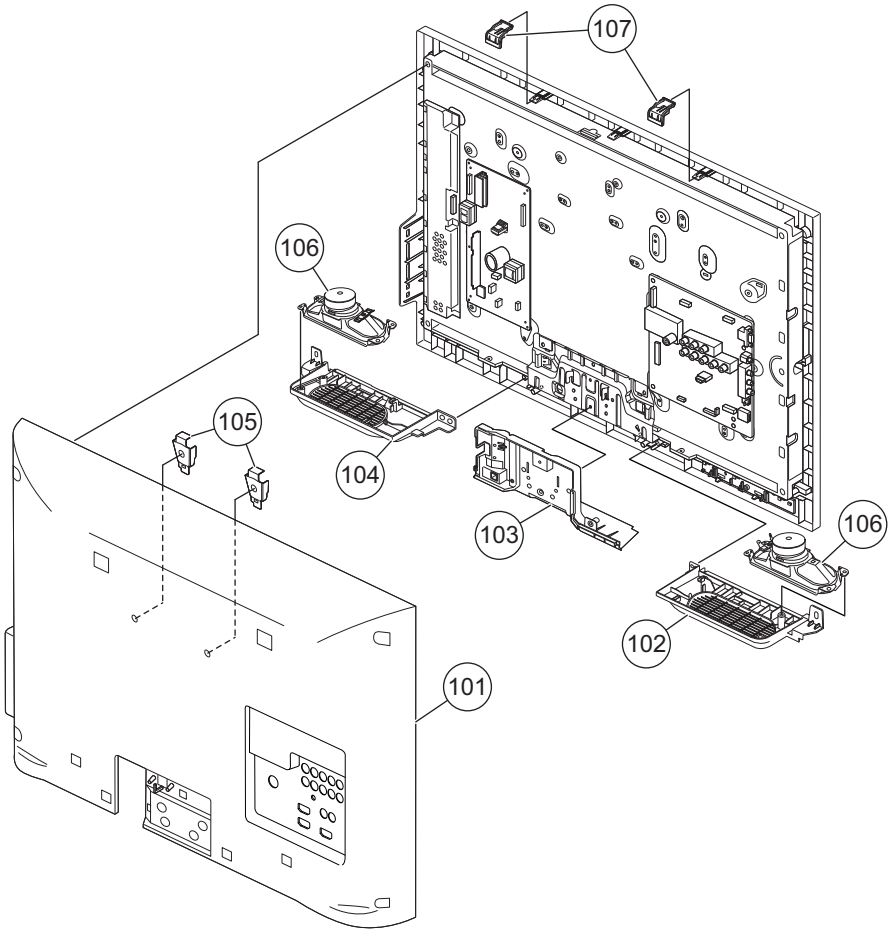






NOTE: The components identified by shading and  mark are critical for safety. Replace only with part number specified.

NOTE: Les composants identifiés par un trame et une marque  sont critiques pour la securite. Ne les remplacer que par une piece portant le numero specifie.

NOTE: The components identified by a red outline and a  mark contain confidential information. Specific instructions must be adhered to whenever these components are repaired and/or replaced. See Appendix A: Encryption Key Components in the back of this manual.

(Check the [Sony Electronics Service Information](http://www.sony.com/electronics/service) website for any additional service related issues for this model.)



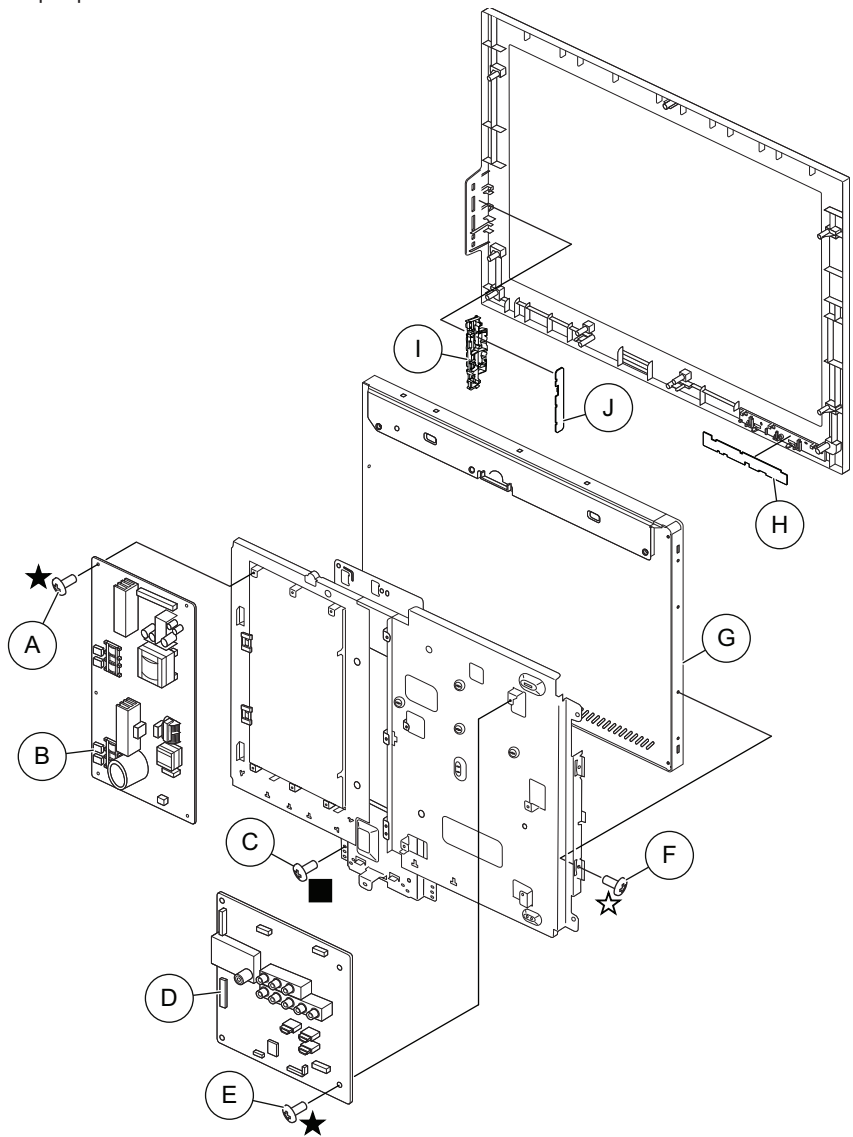
REF. NO.	PART NO.	DESCRIPTION	[ASSEMBLY INCLUDES]	REF. NO.	PART NO.	DESCRIPTION	[ASSEMBLY INCLUDES]
101	4-165-554-01	REAR COVER(32)			2-580-640-01	SCREW, +BVTP 4X16 TYPE2 IT-3	
102	4-175-847-01	COVER, SPEAKER(32L)			2-580-595-01	SCREW, +PSW M3X12	
103	4-175-846-01	COVER, UNDER (32)			7-685-648-79	SCREW, +BVTP 3X12 TYPE2 IT-3	
104	4-175-848-01	COVER, SPEAKER(32R)			4-159-298-01	SCREW, +PSW M4X10	
105	4-181-662-01	BRACKET, VESA (S)					
106	1-858-340-11	LOUDSPEAKER (4.5X12.5CM)					
107	4-175-845-01	SUPPORT, PANEL (32)					

# DISASSEMBLY/PART NUMBER INFORMATION

## 1-3. A BOARD, GD1/G2LE (POWER) BOARDS, LCD PANEL, H BOARD, SWITCH UNIT, AND BEZEL ASSEMBLY REMOVAL

### 1-3-1. KDL-22BX300 ONLY

- (A) Remove 4 screws from GD1 (Power) Board to detach from Main Bracket
- (B) Disconnect 6 connectors from GD1 (Power) Board
- (C) Remove 3 screws from Main Bracket to detach from Bezel Assembly
- (D) Disconnect 5 connectors from A Board
- (E) Remove 4 screws from A Board to detach from Main Bracket
- (F) Remove 4 screws from Main Bracket to detach from Panel
- (G) Carefully Lift up Panel to remove from Bezel
- (H) Disconnect 1 connector from H Board and release from LED Guide
- (I) Pull Button Control from underneath and lift out from Bezel Assembly
- (J) Disconnect 1 connector and release 3 top clips to remove Switch Unit

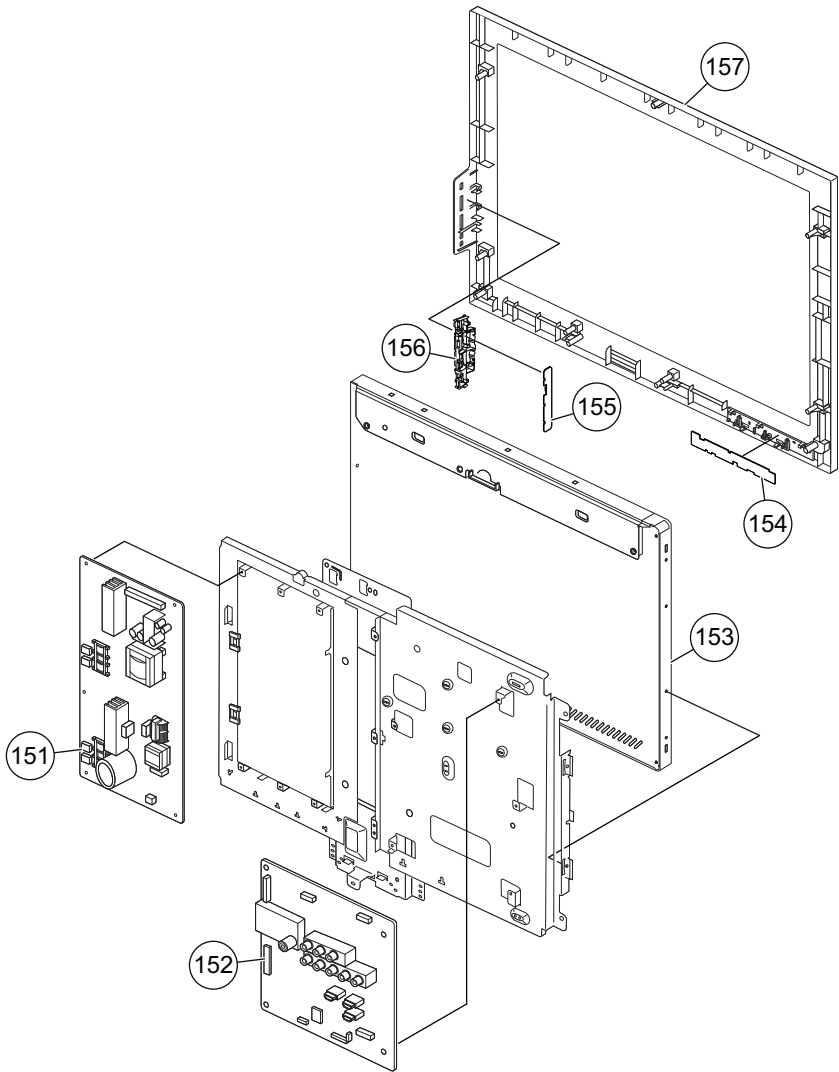


NOTE: The components identified by shading and ⚠ mark are critical for safety. Replace only with part number specified.

NOTE: Les composants identifiés par un trame et ⚠ sont critiques pour la sécurité. Ne les remplacer que par une pièce portant le numéro spécifié.

NOTE: The components identified by a red outline and a 🔒 mark contain confidential information. Specific instructions must be adhered to whenever these components are repaired and/or replaced. See Appendix A: Encryption Key Components in the back of this manual.

(Check the [Sony Electronics Service Information](#) website for any additional service related issues for this model.)

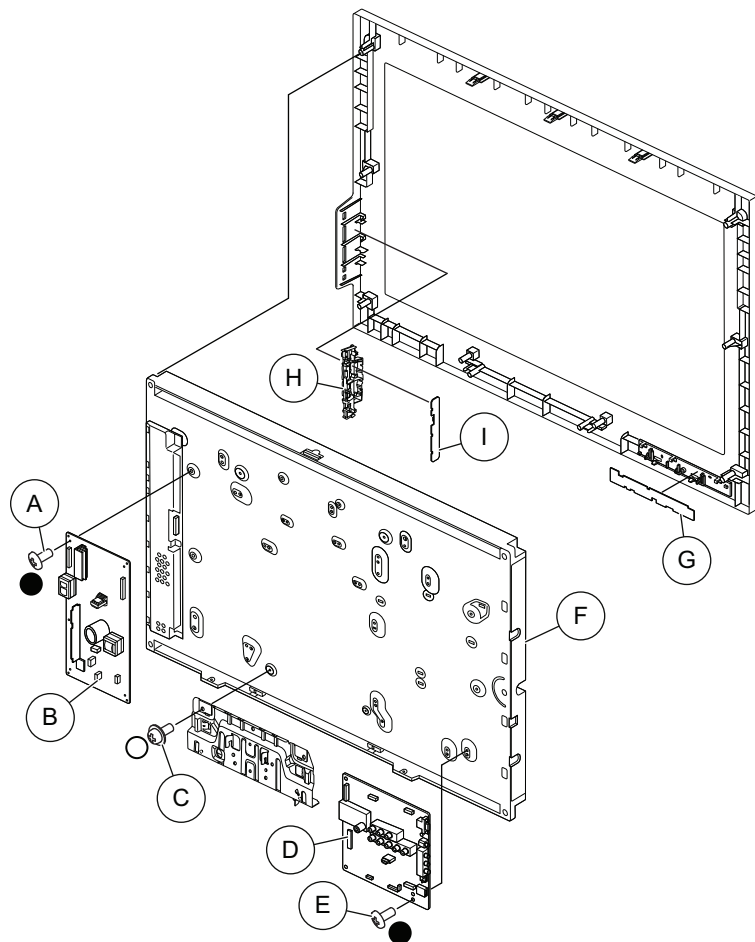



REF. NO.	PART NO.	DESCRIPTION	[ASSEMBLY INCLUDES]	REF. NO.	PART NO.	DESCRIPTION	[ASSEMBLY INCLUDES]
151	1-474-204-41	GD1 (POWER) BOARD, COMPLETE		156	4-163-790-01	BUTTON, CONTROL	
🔒 152	1-857-611-11	A BOARD, MOUNTED		157	X-2547-391-1	BEZEL (CON22) ASSEMBLY	
153	N/A	LCD PANEL		■	2-580-640-01	SCREW, +BVTP 4X16 TYPE2 IT-3	
		FOR ALL LCD PANEL PART NUMBER INFORMATION REFER TO THE LCD PANELS SERVICE MANUAL		★	2-580-590-01	SCREW, +PSW M3X5	
		NOTE: After replacing the panel, refer to section 2-2. Selecting the Panel Code After Replacement		★	2-580-629-01	SCREW, +BVST 3X8	
154	1-857-764-11	H2 BOARD, MOUNTED					
155	1-487-962-11	SWITCH UNIT					


# DISASSEMBLY/PART NUMBER INFORMATION


## 1-3-2. KDL-32BX300 WITH S-LCD PANEL ONLY

- (A) Remove 4 screws from G2LE (Power) Board to detach from Panel
- (B) Disconnect 3 connectors from G2LE (Power) Board
- (C) Remove 2 screws from Bottom Frame to detach from Panel
- (D) Disconnect 5 connectors from A Board
- (E) Remove 4 screws from A Board to detach from Panel
- (F) Carefully Lift up Panel to remove from Bezel
- (G) Disconnect 1 connector from H Board and release from LED Guide
- (H) Pull Button Control from underneath and lift out from Bezel Assembly
- (I) Disconnect 1 connector and release 3 top clips to remove Switch Unit

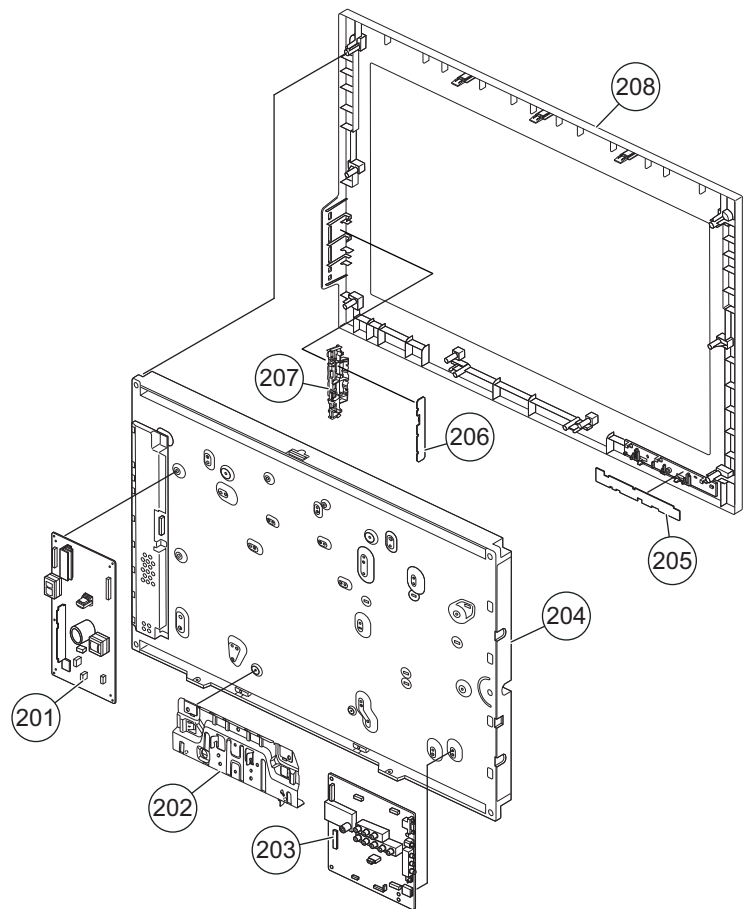



NOTE: The components identified by shading and  mark are critical for safety. Replace only with part number specified.

NOTE: Les composants identifiés par un trame et une marque  sont critiques pour la sécurité. Ne les remplacer que par une pièce portant le numéro spécifié.

NOTE: The components identified by a red outline and a  mark contain confidential information. Specific instructions must be adhered to whenever these components are repaired and/or replaced. See Appendix A: Encryption Key Components in the back of this manual.

(Check the [Sony Electronics Service Information](#) website for any additional service related issues for this model.)



REF. NO.	PART NO.	DESCRIPTION	[ASSEMBLY INCLUDES]	REF. NO.	PART NO.	DESCRIPTION	[ASSEMBLY INCLUDES]
201	1-474-200-11	G2LE BOARD, COMPLETE		205	1-857-612-11	H BOARD, MOUNTED	
202	NA	FRAME, BOTTOM (32)		206	1-857-764-11	H2 BOARD, MOUNTED	
		FOR FRAME PART NUMBER INFORMATION		207	4-163-790-01	BUTTON, CONTROL	
		REFER TO THE LCD PANELS SERVICE MANUAL		208	X-2547-388-1	BEZEL (32) ASSEMBLY	
 203	NA	A BOARD, MOUNTED					
		FOR A BOARD PART NUMBER INFORMATION					
		REFER TO THE LCD PANELS SERVICE MANUAL					
		NOTE: After replacing the panel, refer to section 2-2. Selecting the Panel Code After Replacement					
204	NA	LCD PANEL					
		FOR ALL LCD PANEL PART NUMBER INFORMATION					
		REFER TO THE LCD PANELS SERVICE MANUAL					

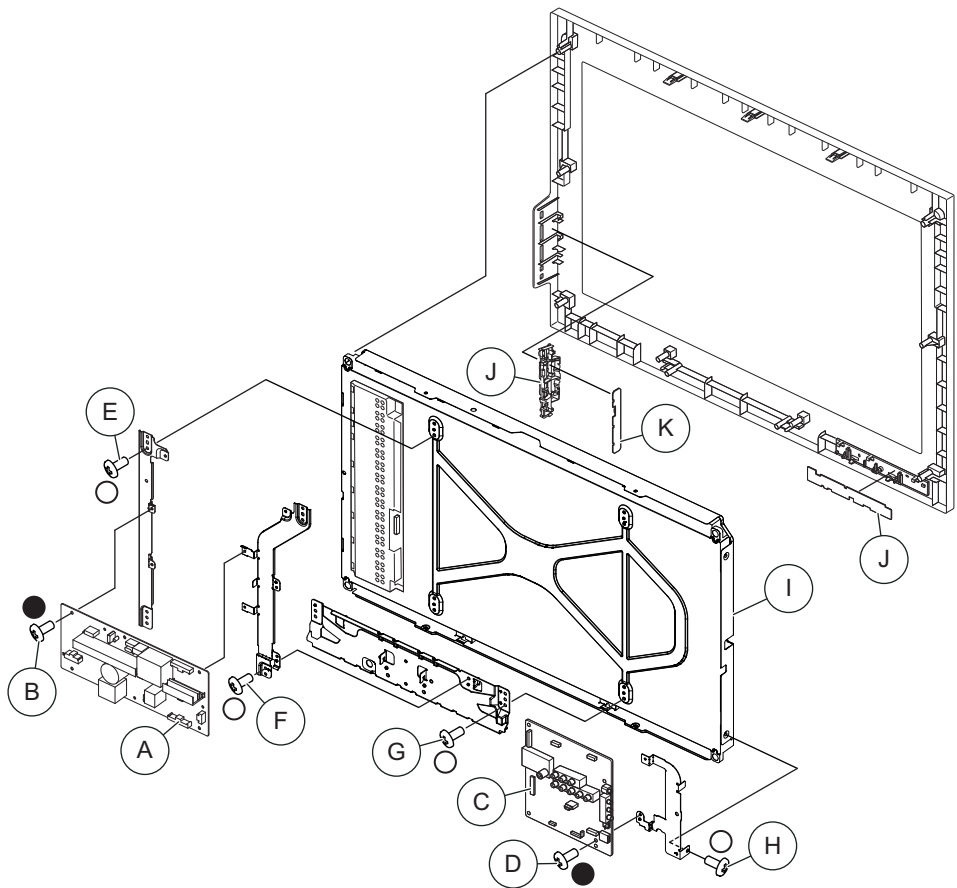
- 2-580-592-01 SCREW, +PSW M3X8
- 4-159-298-01 SCREW, +PSW M4X10





# DISASSEMBLY/PART NUMBER INFORMATION


## 1-3-3. KDL-32BX300 WITH CMO PANEL ONLY

- (A) Disconnect 3 connectors from G2LE (Power) Board
- (B) Remove 4 screws from G2LE (Power) Board to detach from Left and Right Spine Frames
- (C) Disconnect 5 connectors from A Board
- (D) Remove 4 screws from A Board to detach from Left Spine Frame and Support Bracket
- (E) Remove 2 screws from Left and Right Spine Frames to detach from LCD Panel
- (F) Remove 2 screws from Left and Right Spine Frames to detach from Bottom Frame
- (G) Remove 1 screw from Bottom Frame to detach from LCD Panel
- (H) Remove 1 screw from Support Bracket to detach from LCD Panel
- (I) Carefully Lift up LCD Panel to remove from Bezel
- (J) Pull Button Control From underneath and lift out from Bezel Assembly
- (K) Disconnect 1 connector and release 3 top clips to remove H2 Board
- (L) Disconnect 1 connector from H Board and release from LED Guide

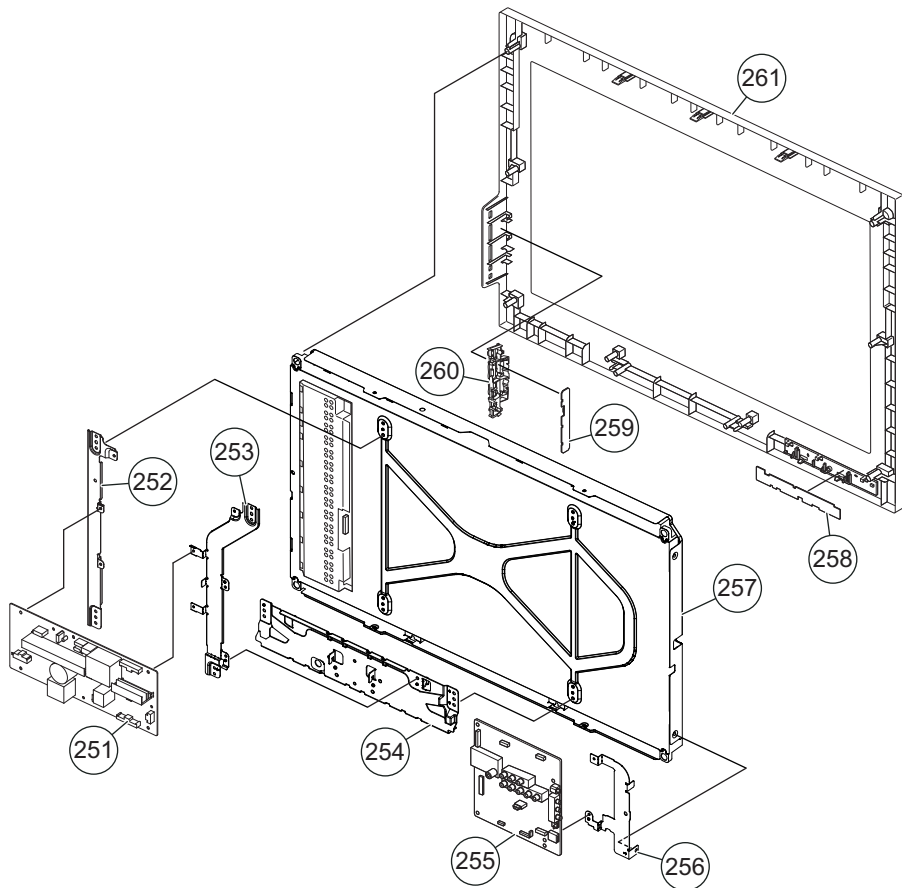



NOTE: The components identified by shading and  mark are critical for safety. Replace only with part number specified.

NOTE: Les composants identifiés par un trame et une marque  sont critiques pour la sécurité. Ne les remplacer que par une pièce portant le numéro spécifié.

NOTE: The components identified by a red outline and a  mark contain confidential information. Specific instructions must be adhered to whenever these components are repaired and/or replaced. See Appendix A: Encryption Key Components in the back of this manual.

(Check the [Sony Electronics Service Information](#) website for any additional service related issues for this model.)



REF. NO.	PART NO.	DESCRIPTION	[ASSEMBLY INCLUDES]	REF. NO.	PART NO.	DESCRIPTION	[ASSEMBLY INCLUDES]
251	1-474-200-11	G2LE BOARD, COMPLETE		256	NA	BRACKET, SUPPORT(BM3)	
252	NA	FRAME, SPINE(R) (32)				FOR BRACKET PART NUMBER INFORMATION	
253	NA	FRAME, SPINE(L) (32)				REFER TO THE LCD PANELS SERVICE MANUAL	
254	NA	FRAME, BOTTOM (32)		257	NA	LCD PANEL	
		FOR FRAME PART NUMBER INFORMATION				FOR ALL LCD PANEL PART NUMBER INFORMATION	
		REFER TO THE LCD PANELS SERVICE MANUAL				REFER TO THE LCD PANELS SERVICE MANUAL	
	255	A BOARD, MOUNTED		258	1-857-612-11	H BOARD, MOUNTED	
		FOR A BOARD PART NUMBER INFORMATION		259	1-857-764-11	H2 BOARD, MOUNTED	
		REFER TO THE LCD PANELS SERVICE MANUAL		260	4-163-790-01	BUTTON, CONTROL	
		NOTE: After replacing the panel, refer to section		261	X-2547-388-1	BEZEL (32) ASSEMBLY	
		2-2. Selecting the Panel Code After Replacement		●	2-580-592-01	SCREW, +PSW M3X8	
				○	4-159-298-01	SCREW, +PSW M4X10	

1-4. CLEANING THE LCD PANEL

CAUTION: When cleaning the TV, be sure to unplug the power cord to avoid any chance of electric shock.

- Clean the cabinet of the TV with a dry soft cloth.
- Wipe the LCD screen gently with a soft cloth.
- Stubborn stains may be removed with a cloth slightly moistened with a solution of mild soap and warm water.
- If using a chemically pretreated cloth, please follow the instruction provided on the package.
- Never use strong solvents such as a thinner, alcohol or benzine for cleaning.
- Periodic vacuuming of the ventilation openings is recommended to ensure to proper ventilation.

1-5. SCREW LEGEND

KDL-22BX300

	P/N	DESCRIPTION	REMARKS	TOTAL
■	2-580-640-01	SCREW, +BVTP 4X16 TYPE2 IT-3	RC(4), UC to BEZ(2), SPKR BRKTS to BEZ(4), SPKRS to SPKR BRKTS(8), MAIN BRKT to BEZ(3)	21
□	2-580-595-01	SCREW, +PSW M3X12	NOT IN THIS MODEL	0
▼	7-685-648-79	SCREW, +BVTP 3X12 TYPE2 IT-3	RC to TERMINAL(1), RC to VESA PLATE(1)	2
▽	2-580-608-01	SCREW, +PSW M5X16	TABLE-TOP STAND(3)	3
●	2-580-592-01	SCREW, +PSW M3X8	NOT IN THIS MODEL	0
○	4-159-298-01	SCREW, +PSW M4X10	NECK to BASE ASSY(3)	3
☆	2-580-590-01	SCREW, +PSW M3X5	MAIN BRKT to PNL(4)	4
★	2-580-629-01	SCREW, +BVST 3X8	A(4), GD1(4)	8

KDL-32BX300

	P/N	DESCRIPTION	REMARKS	TOTAL
■	2-580-640-01	SCREW, +BVTP 4X16 TYPE2 IT-3	RC(10), SPKR BRKT-R(1), SPKR BRKT-L(1)	12
□	2-580-595-01	SCREW, +PSW M3X12	RC TOP-CENTER(2)	2
▼	7-685-648-79	SCREW, +BVTP 3X12 TYPE2 IT-3	RC to TERMINAL(1), SPKR-R to SP BRKT-R(2), SPKR-L to SP BRKT-L(2)	5
▽	2-580-608-01	SCREW, +PSW M5X16	TABLE-TOP STAND(4)	4
●	2-580-592-01	SCREW, +PSW M3X8	A(4), G2LE(4)	8
○	4-159-298-01	SCREW, +PSW M4X10	UC to BTM FRM(1), BTM FRM to PNL(2), NECK to BASE ASSY(3), SPINE to PNL(4), BM3 BRKT to PNL(1)	11
☆	2-580-590-01	SCREW, +PSW M3X5	NOT IN THIS MODEL	0
★	2-580-629-01	SCREW, +BVST 3X8	NOT IN THIS MODEL	0

NOTE: The components identified by shading and △ mark are critical for safety. Replace only with part number specified.

NOTE: Les composants identifiés per un trame et une marque △ sont critiques pour la securite. Ne les remplacer que par une piece portant le numero specifie.

NOTE: The components identified by a red outline and a 🔒 mark contain confidential information. Specific instructions must be adhered to whenever these components are repaired and/or replaced. See Appendix A: Encryption Key Components in the back of this manual.

(Check the [Sony Electronics Service Information](#) website for any additional service related issues for this model.)

# DISASSEMBLY/PART NUMBER INFORMATION

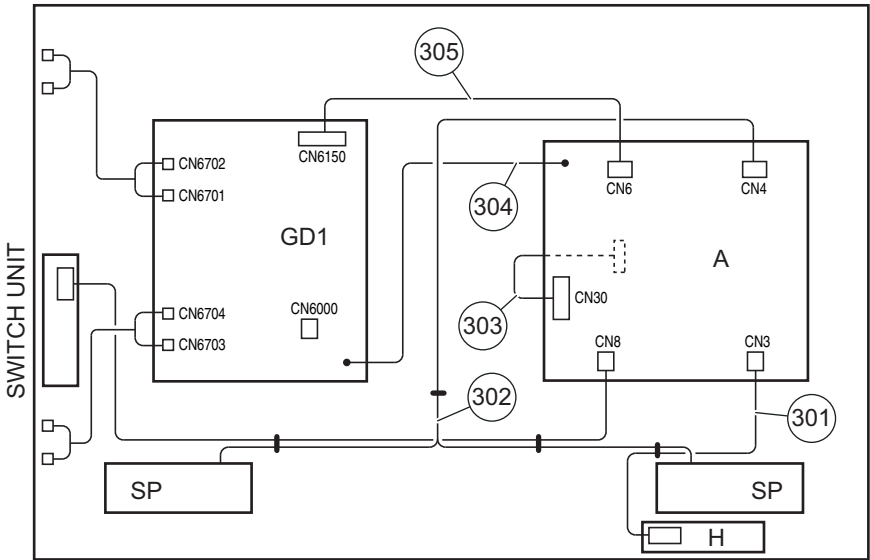
## 1-6. CONNECTORS

NOTE: The components identified by shading and ⚠ mark are critical for safety. Replace only with part number specified.

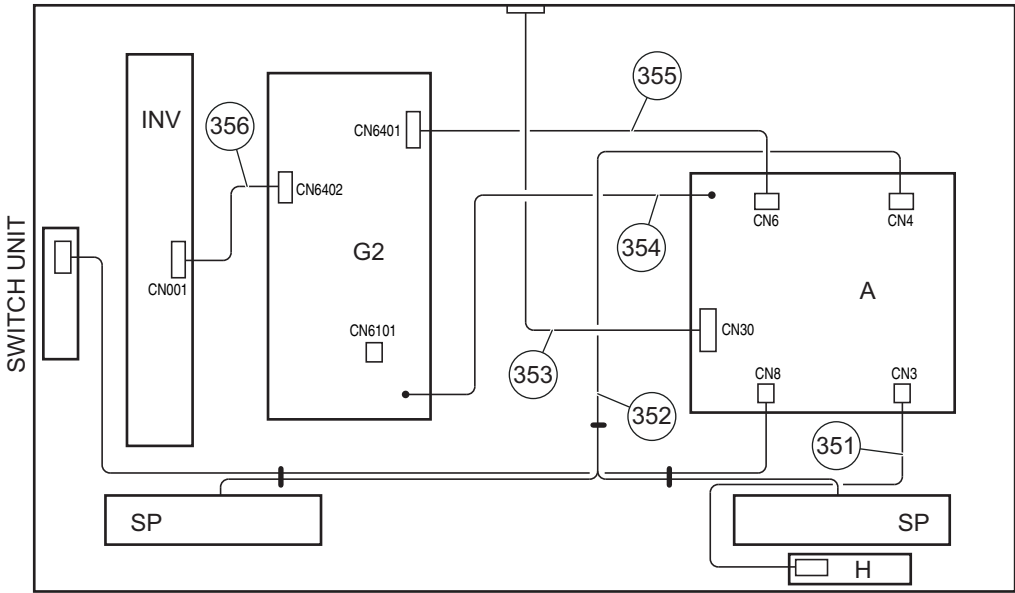
NOTE: Les composants identifiés par un trame et ⚠ sont critiques pour la sécurité. Ne les remplacer que par une pièce portant le numéro spécifié.

NOTE: The components identified by a red outline and a 🔒 mark contain confidential information. Specific instructions must be adhered to whenever these components are repaired and/or replaced. See Appendix A: Encryption Key Components in the back of this manual.

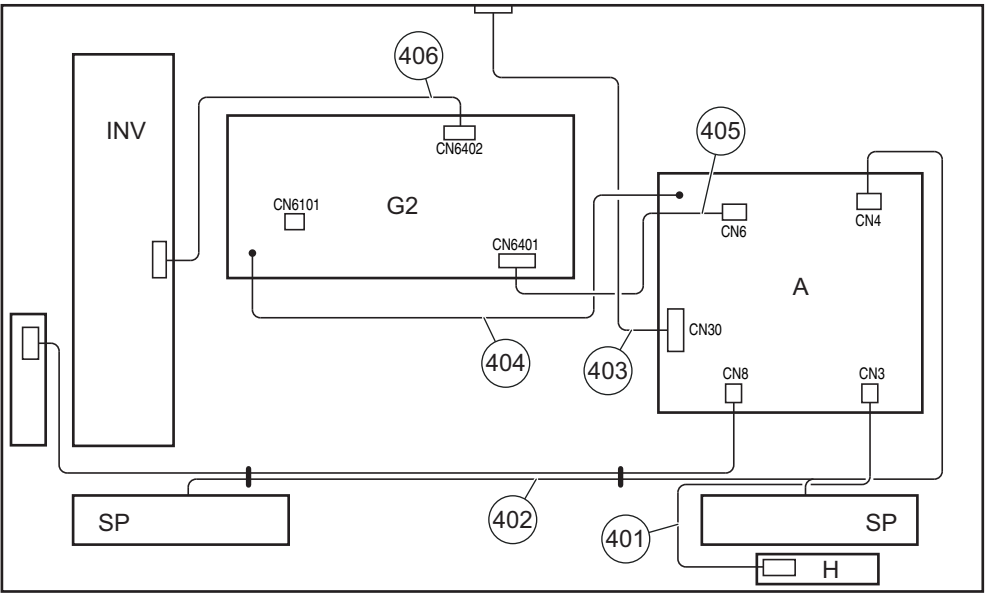
### 1-6-1. KDL-22BX300 ONLY



### 1-6-2. KDL-32BX300 (S-LCD PANEL ONLY)




### 1-6-3. KDL-32BX300 (CMO PANEL ONLY)



REF. NO.	PART NO.	DESCRIPTION	[ASSEMBLY INCLUDES]	REF. NO.	PART NO.	DESCRIPTION	[ASSEMBLY INCLUDES]	REF. NO.	PART NO.	DESCRIPTION	[ASSEMBLY INCLUDES]
* 301	1-910-100-45	CONNECTOR ASSY22M B TO I BOARD		* 351	1-910-100-33	CONNECTOR ASSY 32 M TO I BOARD		* 401	1-910-100-33	CONNECTOR ASSY 32 M TO I BOARD	
* 302	1-910-100-47	CONNECTOR ASSY22MAIN TO KEY/SP		* 352	1-910-100-35	CONNECTOR ASSY32MAIN TO KEY/SP		* 402	1-910-100-35	CONNECTOR ASSY32MAIN TO KEY/SP	
* 303	1-910-100-43	(LVDS) CONNECTOR ASSY 22 (FFC)		* 353	NA	(LVDS) CONNECTOR ASSY 32 (FFC)		* 403	NA	(LVDS) CONNECTOR ASSY 32	
304	1-910-100-51	CONNECTOR ASSY 22 GND CABLE				FOR CONNECTOR PART NUMBER INFORMATION				FOR CONNECTOR PART NUMBER INFORMATION	
* 305	1-910-100-49	CONNECTOR ASSY22 POWER TO MAIN				REFER TO THE LCD PANELS SERVICE MANUAL				REFER TO THE LCD PANELS SERVICE MANUAL	
				354	1-910-100-41	CONNECTOR ASSY 32 GND CABLE		404	1-910-100-41	CONNECTOR ASSY 32 GND CABLE	
				* 355	NA	CONNECTOR ASSY32 POWER TO MAIN		* 405	NA	CONNECTOR ASSY 32POWER TO MAIN	
						FOR CONNECTOR PART NUMBER INFORMATION				FOR CONNECTOR PART NUMBER INFORMATION	
						REFER TO THE LCD PANELS SERVICE MANUAL				REFER TO THE LCD PANELS SERVICE MANUAL	
				* 356	NA	CONNECTOR ASSY 32 INV-POWER		* 406	NA	CONNECTOR ASSY 32 INV-POWER	
						FOR CONNECTOR PART NUMBER INFORMATION				FOR CONNECTOR PART NUMBER INFORMATION	
						REFER TO THE LCD PANELS SERVICE MANUAL				REFER TO THE LCD PANELS SERVICE MANUAL	

# DISASSEMBLY/PART NUMBER INFORMATION

## 1-7. ACCESSORIES AND PACKING

	1-837-452-11	AC POWER SUPPLY CORD WITH CONN
	3-299-071-03	FLYER, SAFETY
	4-183-343-11	GUIDE, QUICK SET UP (ENGLISH VERSION)
	4-183-343-21	GUIDE, QUICK SET UP (FRENCH VERSION)
	4-183-343-31	GUIDE, QUICK SET UP (SPANISH VERSION)
	4-181-644-11	MANUAL, INSTRUCTION (ENGLISH VERSION)
	4-181-644-21	MANUAL, INSTRUCTION (FRENCH VERSION)
	4-181-644-31	MANUAL, INSTRUCTION (SPANISH VERSION)

	1-837-879-11	POWER SUPPLY CORD (KDL-22BX300 CHILE/PERU ONLY)
*	4-176-351-11	SUPPLEMENT(STAND INSTALLATION)

## 1-8. MISCELLANEOUS

4-182-203-11	GASKET (13X10) (KDL-32BX300 ONLY)
X-2348-140-3	SUPPORT BELT KIT
7-632-452-24	TAPE (NO.303) 18MMX35M YEL

## 1-9. REMOTE COMMANDER

1-487-827-11	REMOTE COMMANDER (RM-YD035)
--------------	-----------------------------

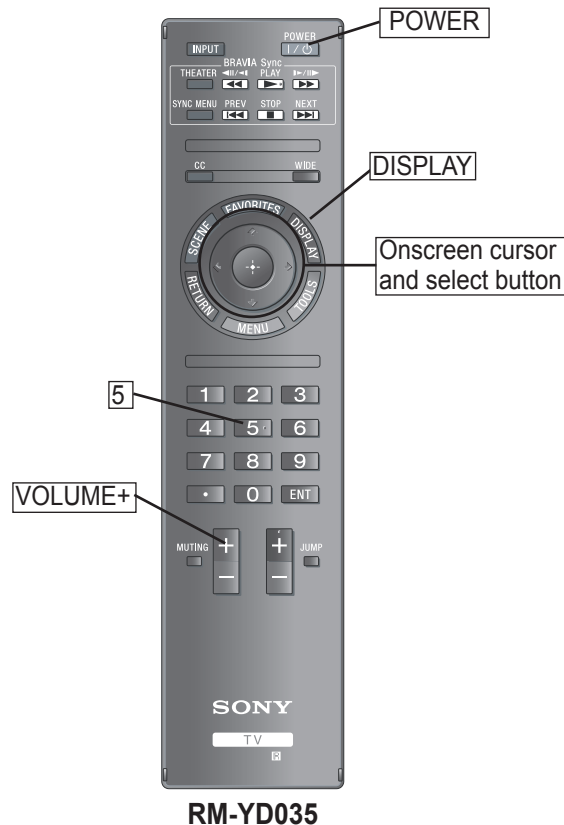


# SEC 2. SERVICE ADJUSTMENTS

## 2-1. ACCESSING SERVICE ADJUSTMENT MODE

1. TV must be in Standby mode. (Power On).
2. Press the following buttons on the Remote Commander within a second of each other:

**DISPLAY** → Channel **5** → Volume **+** → **POWER**



RM-YD035

Service Mode			
Sound Adjust...		>>	
Wide Band Tuning		>>	
Range Scan...		>>	
Self daignosis history		>>	
Status Information...		>>	
LVDS Spectrum(%0)	<[	20	]>
DPMS	<[	Off	]>
Low of HPD	<[	5	]>
TVD_MCDONE_CNT	<[	20	]>
Demo Special		>>	
Bypass AVI Info Detect	<[	Off	]>
Panel Selection	<[	T930	]>
[</>]Set [Menu] Exit			

Sample Service Menu

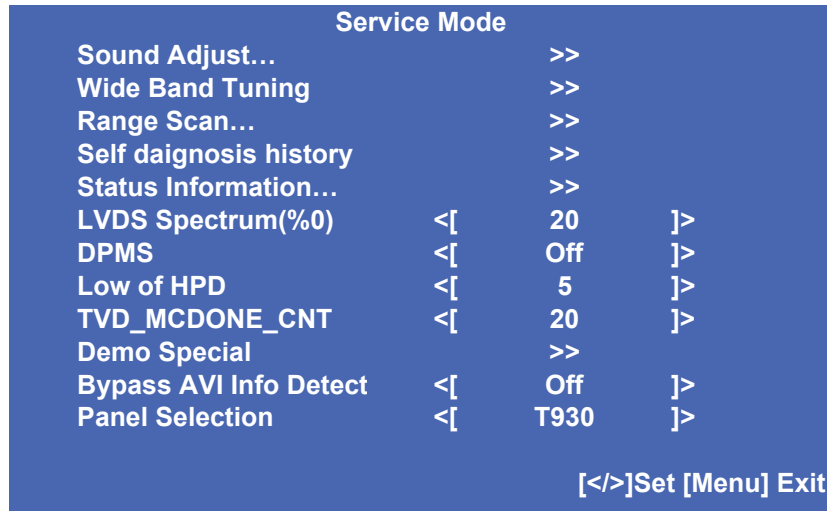
3. To exit service mode, turn the power off.


# SERVICE ADJUSTMENTS

## 2-2. SELECTING THE PANEL CODE AFTER REPLACEMENT

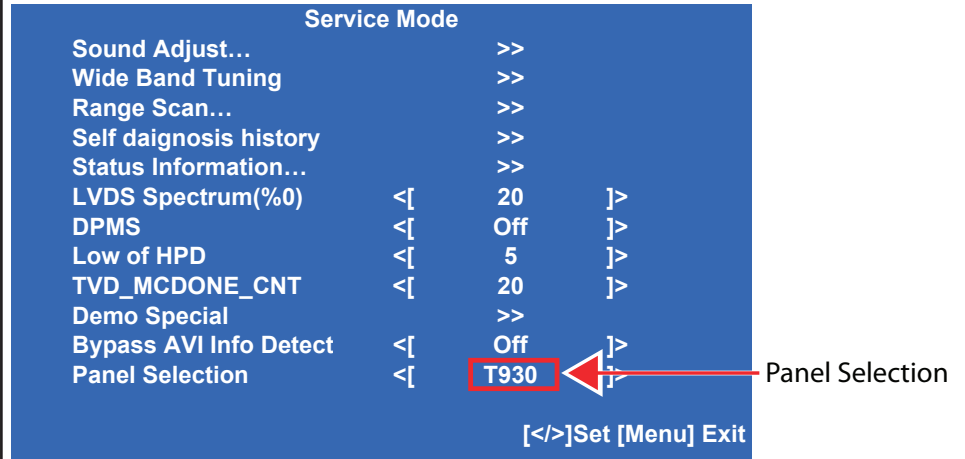
1. TV must be in standby mode. (Power On).
2. Press the following buttons on the Remote Commander within a second of each other:

**DISPLAY** → Channel **5** → Volume **+** → **POWER**.



3. Using the ⬇ Onscreen cursor button, scroll down to select Panel Selection.
4. Press  to enter the Panel Selection.
5. Using the table, press the ⬆ or ⬅ Onscreen cursor buttons to select the correct panel.

Model	Panel ID
KDL-22BX300	T930
KDL-32BX300	T940



6. To save the changes, press the **MENU** button.
7. Press **POWER** to turn the power Off, then press **POWER** to turn the power back On to refresh the new selection.
8. Proceed to “Verifying the Panel Code”.

**NOTE:** The other categories listed in the Service Mode menu will be covered in the training manual for these models.

# SERVICE ADJUSTMENTS

## 2-2-1. VERIFYING THE PANEL CODE

After selecting the appropriate panel, the information can be confirmed by accessing Factory Mode.

1. TV must be in standby mode. (Power On).
2. Press the following buttons on the Remote Commander within a second of each other:



Factory Mode		
Input Source	<[	Video 1 ]>
White Balance	<[	Off ]>
Internal Pattern	<[	Off ]>
Color Temp		>>
Aging Mode	<[	Off ]>
ADC Calibration		>>
TVD ADC Calibration		>>
Auto Phase	<[	Off ]>
Factory Reset (default)	<[	Off ]>
EDID WP	<[	Protection ]>
Factory Reset (limited)	<[	Off ]>
Recall Data	<[	Off ]>
Data Backup	<[	Off ]>
Site Air Channels	<[	Off ]>
Site Cable Channels	<[	Off ]>
SW Version		ver1.000T
PQ Version		PQ0.1012
AQ Version		AQ1.0000
Panel Name		T216XW01
[</>]Set [Menu] Exit		

Sample Factory Menu

3. Review the information displayed for **Panel Name** to verify the correct panel size was selected.

Factory Mode		
Input Source	<[	Video 1 ]>
White Balance	<[	Off ]>
Internal Pattern	<[	Off ]>
Color Temp		>>
Aging Mode	<[	Off ]>
ADC Calibration		>>
TVD ADC Calibration		>>
Auto Phase	<[	Off ]>
Factory Reset (default)	<[	Off ]>
EDID WP	<[	Protection ]>
Factory Reset (limited)	<[	Off ]>
Recall Data	<[	Off ]>
Data Backup	<[	Off ]>
Site Air Channels	<[	Off ]>
Site Cable Channels	<[	Off ]>
SW Version		ver1.000T
PQ Version		PQ0.1012
AQ Version		AQ1.0000
Panel Name		T216XW01
[</>]Set [Menu] Exit		

**NOTE:** If the correct Panel Name does not display, press **POWER** to turn the power Off to refresh the information, then follow steps 1 through 3 to verify the panel name.

Model Name	LCD Part Number	LCD Description	Panel Name
KDL-22BX300	1-811-130-11	LCD PANEL (V22)	T216XW01 V3
KDL-32BX300	1-811-058-11	LCD PANEL (S32TSC)	LTY[Z]320AP04-001
KDL-32BX300	1-811-058-21	LCD PANEL (S32TSC)	LTY[Z]320AP05-001
KDL-32BX300	1-811-058-31	LCD PANEL (S32TSC)	LTY[Z]320AP04-A01
KDL-32BX300	1-811-058-41	LCD PANEL (S32TSC)	LTY[Z]320AP05-A01

4. To exit Factory Mode without turning Off the TV, press the **MUTING** button.

# SERVICE ADJUSTMENTS

## 2-3. WHITE BALANCE ADJUSTMENTS

The default White Balance data values are set for optimal viewing. The following instructions are for technicians who have been requested to customize calibrations for their customers.

1. TV must be in standby mode. (Power On).
2. Press the following buttons on the Remote Commander within a second of each other:



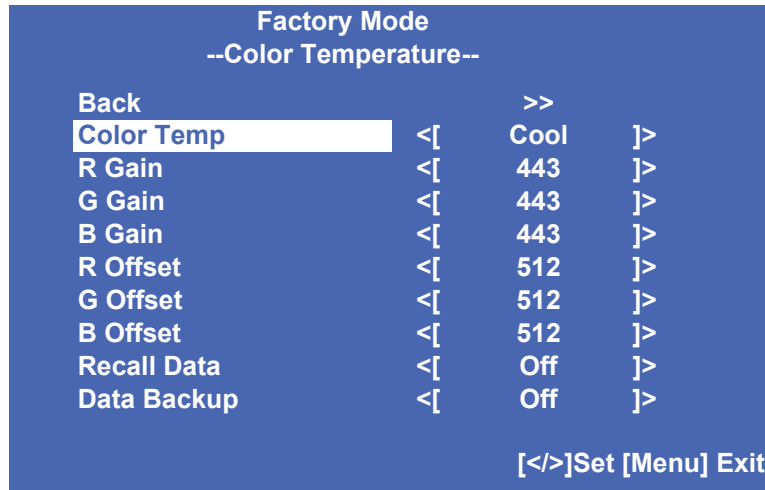
Factory Mode			
Input Source	<[	Video 1	>]
White Balance	<[	Off	>]
Internal Pattern	<[	Off	>]
Color Temp		>>	
Aging Mode	<[	Off	>]
ADC Calibration		>>	
TVD ADC Calibration		>>	
Auto Phase	<[	Off	>]
Factory Reset (default)	<[	Off	>]
EDID WP	<[	Protection	>]
Factory Reset (limited)	<[	Off	>]
Recall Data	<[	Off	>]
Data Backup	<[	Off	>]
Site Air Channels	<[	Off	>]
Site Cable Channels	<[	Off	>]
SW Version		ver1.000T	
PQ Version		PQ0.1012	
AQ Version		AQ1.0000	
Panel Name		T216XW01	
[</>]Set [Menu] Exit			

3. Using the Onscreen cursor button, scroll down to select **Color Temp**.

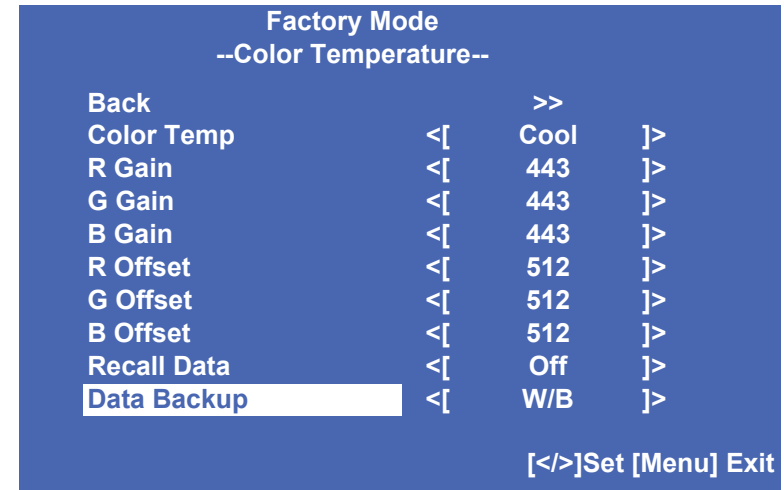
Factory Mode			
Input Source	<[	Video 1	>]
White Balance	<[	Off	>]
Internal Pattern	<[	Off	>]
Color Temp		>>	
Aging Mode	<[	Off	>]
ADC Calibration		>>	
TVD ADC Calibration		>>	
Auto Phase	<[	Off	>]
Factory Reset (default)	<[	Off	>]
EDID WP	<[	Protection	>]
Factory Reset (limited)	<[	Off	>]
Recall Data	<[	Off	>]
Data Backup	<[	Off	>]
Site Air Channels	<[	Off	>]
Site Cable Channels	<[	Off	>]
SW Version		ver1.000T	
PQ Version		PQ0.1012	
AQ Version		AQ1.0000	
Panel Name		T216XW01	
[</>]Set [Menu] Exit			

4. Press to access **Color Temp** adjustments.

# SERVICE ADJUSTMENTS



5. Press the or Onscreen cursor buttons to select the **Color Temp** type. (Cool, Neutral, Warm1, or Warm2.)
6. After the correct Color Temperature is selected, press the to select the Temperature type that needs to be modified.
7. After the correct Temperature type is selected, press the to increase the data value, or press to decrease the data value.
8. Complete the data value adjustments to the remaining temperature items within the selected temperature type.  
NOTE: Changes to the data value must be saved within the Temperature type selected before making changes to one of the other Temperature types.
9. To save the changes, press the to select **Data Backup**, then press .



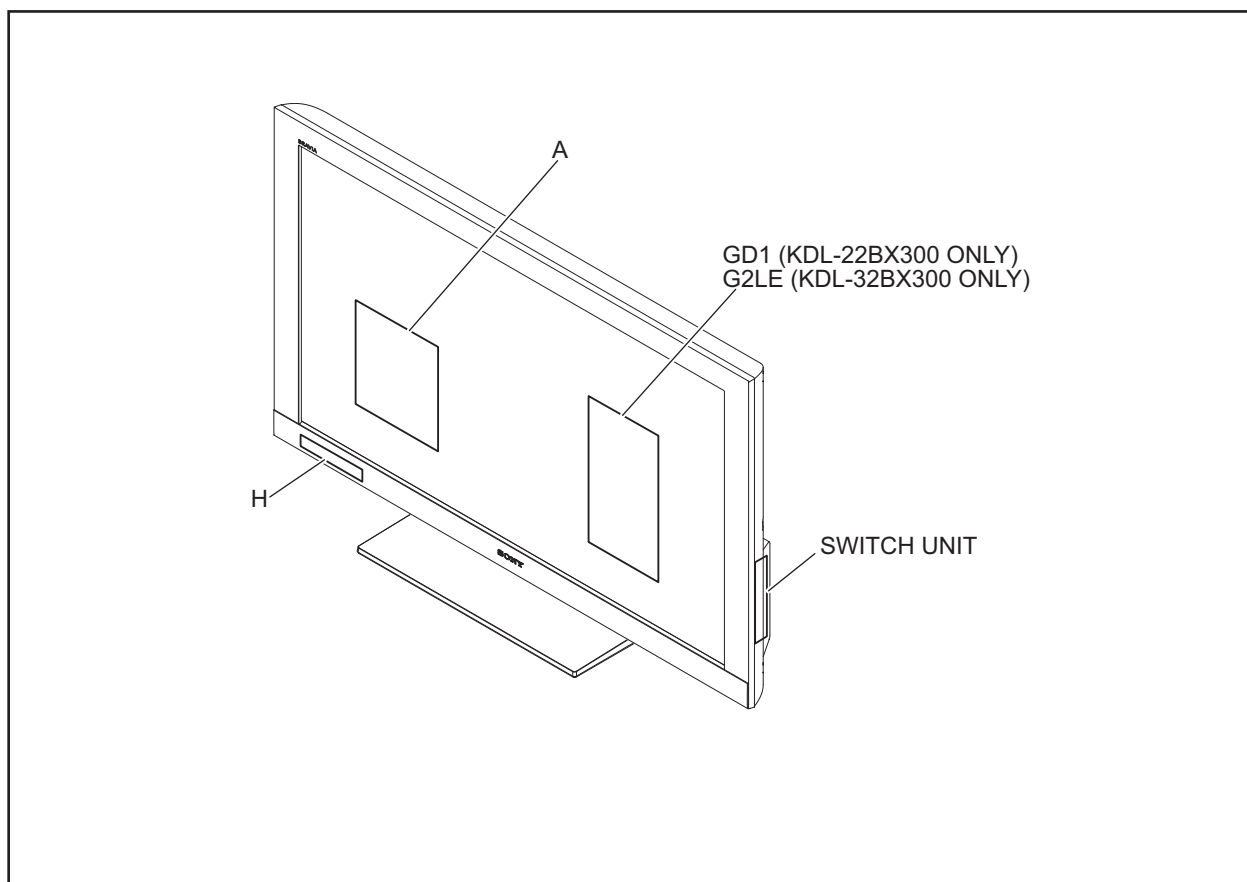
10. Do one of the following:
  - a. To make changes to one of the other Temperature types, repeat steps 5 through 9.
  - b. To exit Factory mode, press **POWER**.

**NOTE:** The other categories listed in the Factory Mode menu will be covered in the training manual for these models.

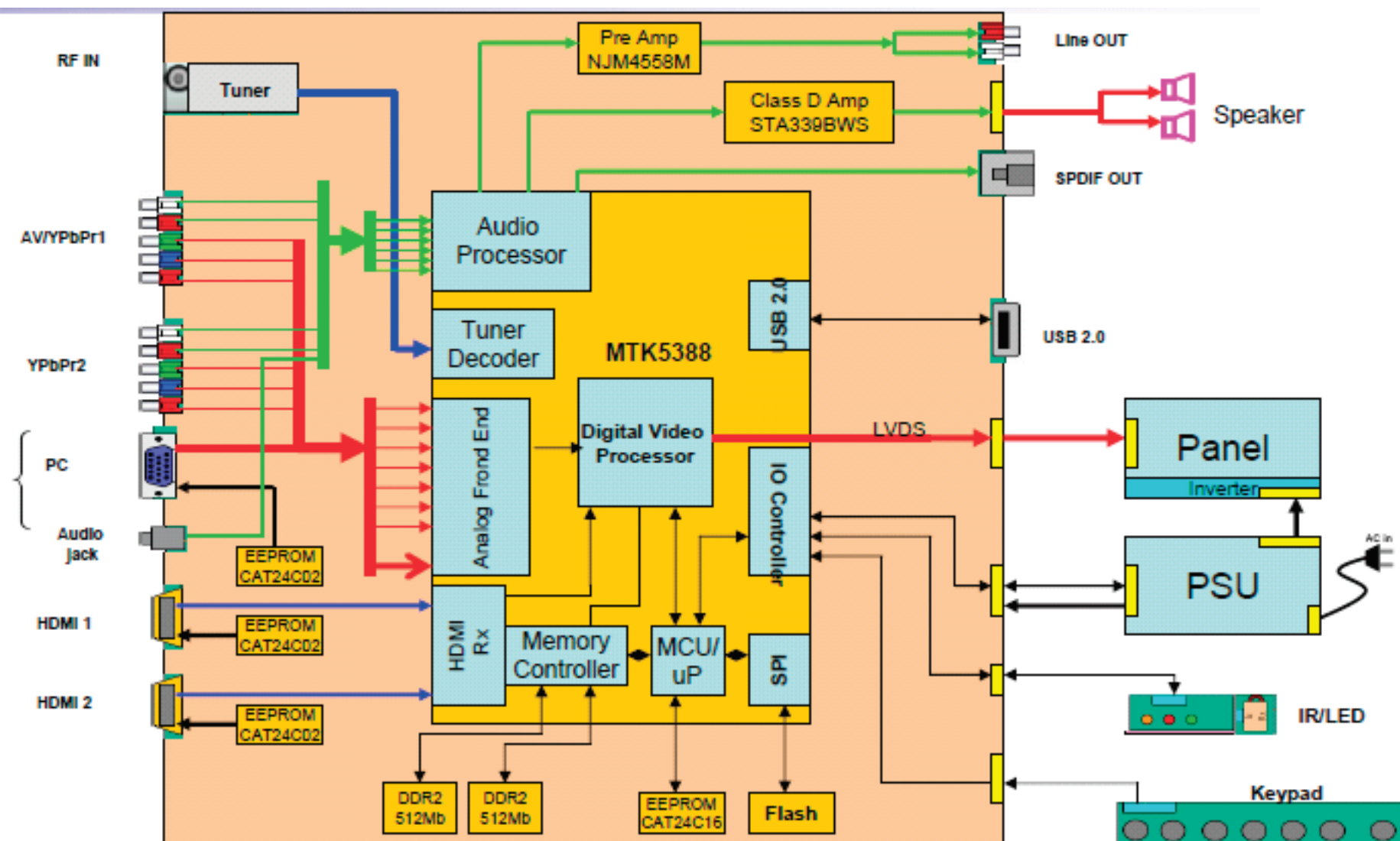
# SEC 3. DIAGRAMS


---

## 3-1. CIRCUIT BOARDS LOCATION



## 3-2. BLOCK DIAGRAM





**SONY**® is a trademark of Sony Electronics

Reproduction in whole or part without written permission is prohibited. All rights reserved

**Sony Corporation**  
Sony Technology Center  
Technical Services  
Service Promotion Department

English  
2010BJ74WEB-1  
Printed in USA  
© 2010.2

9-883-846-03

KDL-22BX300/32BX300

27